

SUMMIT Technology Co., Ltd.

<http://www.summitek.com.tw> Tel: +886-2-29696293 Fax: +886-2-29697362

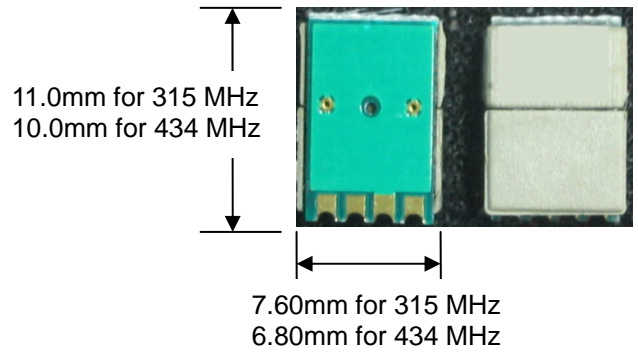
ST-TX02-ASK

DESCRIPTION

ST-TX02 is a low cost A.S.K. SAW transmitter module. It makes RF remote techniques easily, just input the data code and output with a high stability RF signal.

FEATURES

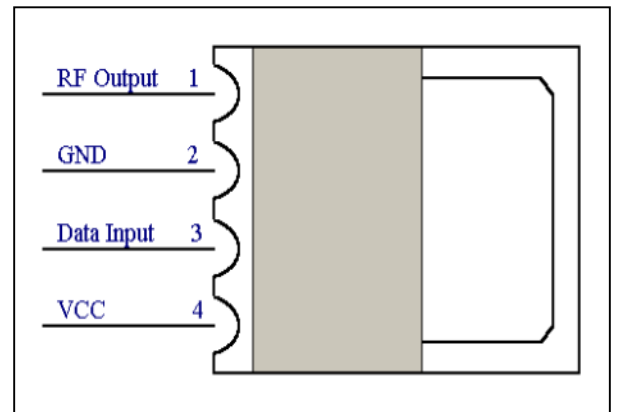
- SAW chip on board technology
- Low power consumption
- Operation temperature range : $-20^{\circ}\text{C} \sim +70^{\circ}\text{C}$
- Wide range of operation voltage : 1.5~15 Volts.
- Easy for application
- RF output -10~+16dBm at 3V DC operation voltage
- Available frequency at follows : 315/433.92 MHz



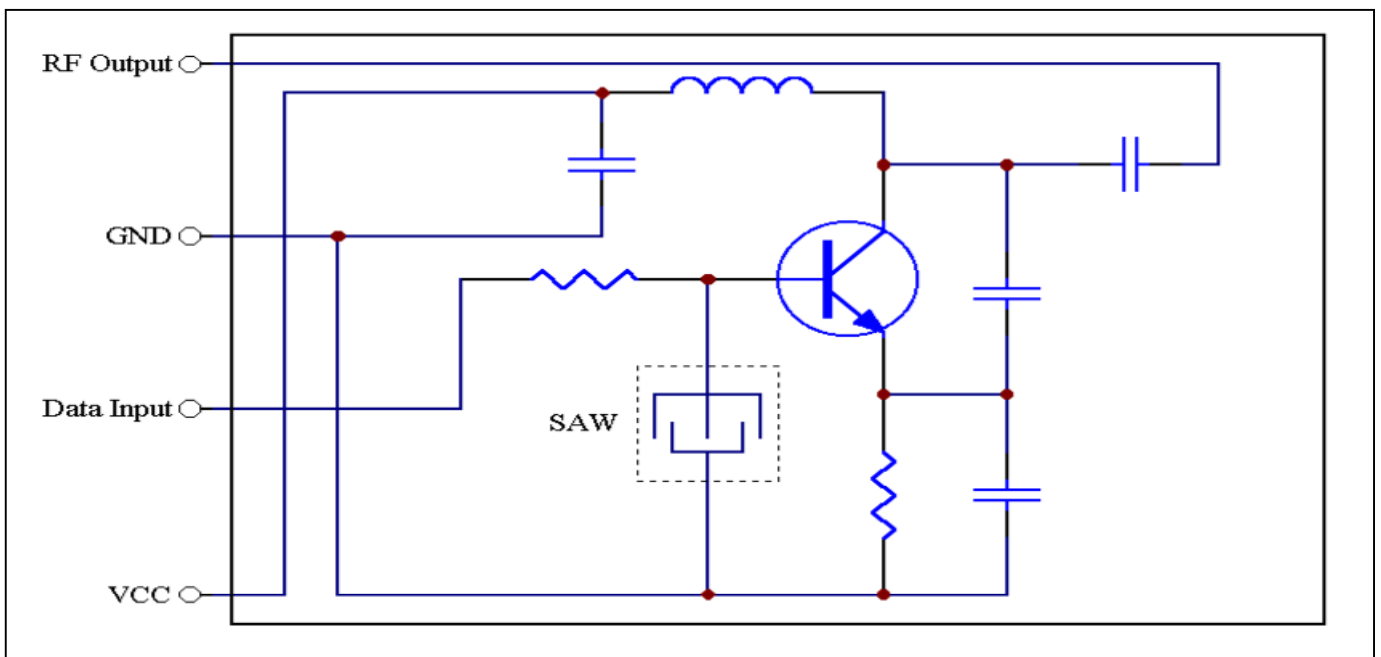
APPLICATIONS

- Car security system
- Garage door controller
- Home security
- Wireless mouse
- Automation system

PIN ASSIGNMENT



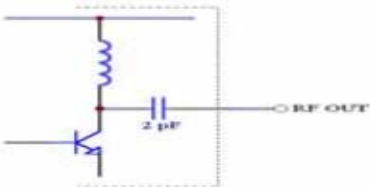
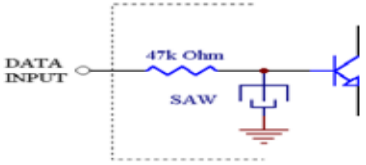
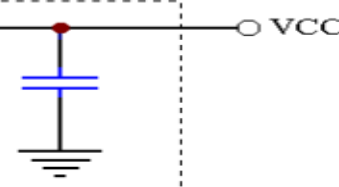
BLOCK DIAGRAM



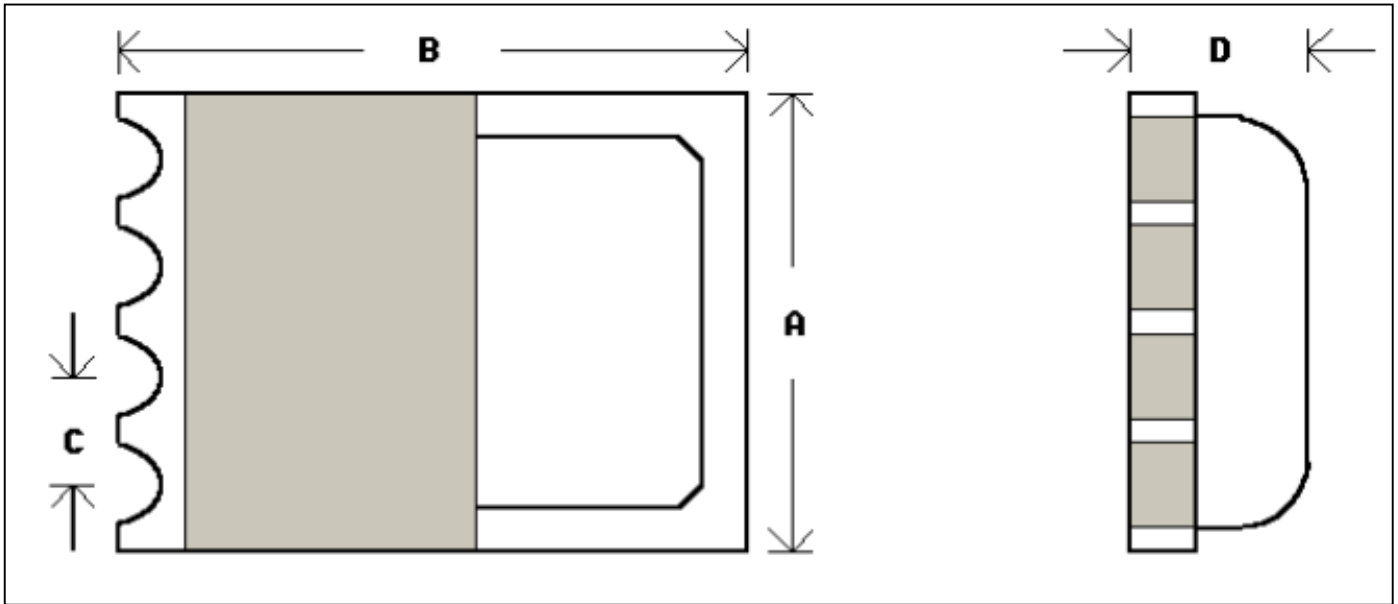
Absolute Maximum Ratings

Parameter	Rating	Units
Supply Voltage	- 0.3 to 15	V DC
Data Input Voltage	- 0.3 to VDD+0.3	V DC
Operating Temperature	- 20 to 70	°C
Storage Temperature	- 40 to 150	°C

Parameter	Specification			Unit	Condition
	Min.	Typical	Max.		
Frequency Range Fix by SAW		315 433.92		MHz	
Frequency Accuracy A		±75		kHz	
Frequency Accuracy B		±250		kHz	
Frequency Accuracy AB		±150		kHz	
Output Power	0	1	3	dBm	At 3 Volt. Power 50 Ω Load
	3	5	8	dBm	At 12Volt. Power 50 Ω Load
Current	3	4	5	mA	At 3 Volt. Power Data Input = VDD
Consumption	17	20	25	mA	At 12Volt. Power Data Input = VDD
Modulation Frequency	0	1	5	kHz	On-Off Key (OOK)

PIN NO.	Function	Description	Inter Connection
1	RF Output	OSC Unbuffered Output	
2	GND	Ground	
3	Data Input	On-Off Key Logic Data Input	
4	VCC	DC Positive Power Supply	

PACKAGE DIMENSION



FREQUENCY	STM SIZE	DIMENSIONS (UNIT : mm)			
		A	B	C	D
303~315 MHz	L	7.60	11.0	1.70	3.0
340~434 MHz	S	6.80	10.0	1.70	3.0